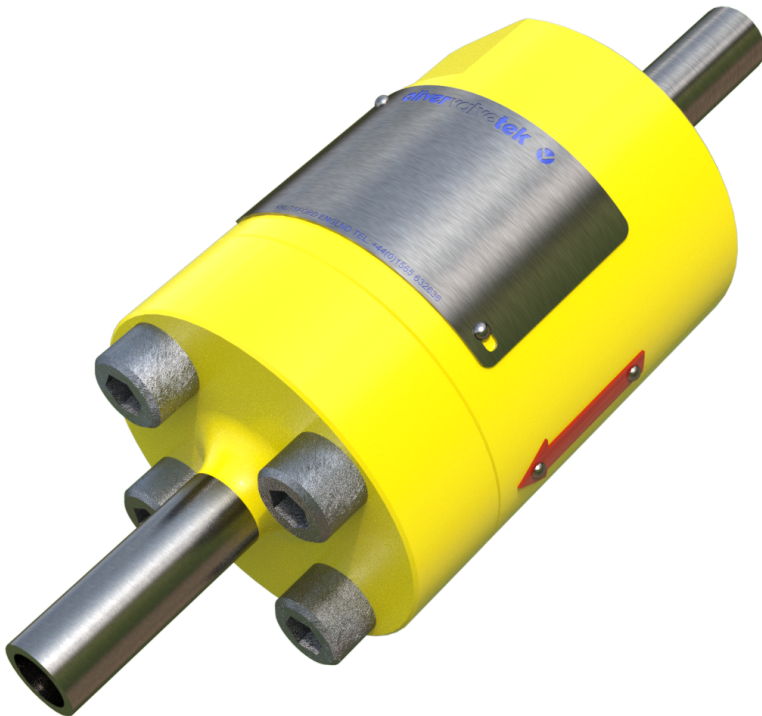


Product Datasheet

3/4" Check Valve

Key Features

- Successfully completed the PR2 Performance Verification Test of API 6A Appendix F and API 17D 2nd Edition.
- The poppet design of the valve has a Peek primary seal with a metal to metal back-up.
- Flow tested for accurate pressure loss data.
- Design ideally suited to be incorporated with gate or needle valves for chemical injection applications.
- Standard certification for pressure retaining and controlling parts are to API 6A PSL 3 and BS EN 10204 3.1. (3.2 option available).



Technical Specification

- Bore size, 3/4" [19mm]
- Pressure rating, 15,000psi [1034bar]
- Performance tested to PR2 for Temperature Classifications P through X (-20°F/-29°C to 350°F/177°C)
- Available in API Material Classes FF and HH to NACE MR-01-75 latest revision

Operator

- Nominal Cracking Pressure 25psi [1.7 bar] +/- 20%

Image shown is a standard 3/4" Check with welded process connections. Due to the many options and configurations available with this product please contact Oliver Valvetek Sales for a bespoke solution.

Rev 1.2

Oliver Valvetek Ltd, Parkgate Industrial Estate, Knutsford, Cheshire, WA16 8DX. United Kingdom.

T: +44 1565 632636 E: sales@valves.co.uk. W: www.valves.co.uk

© Oliver Valvetek 2009