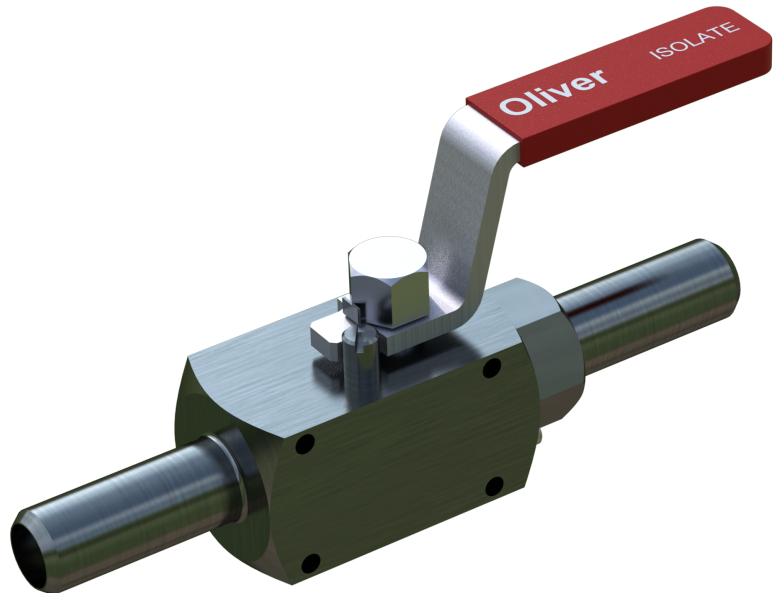


Key Features

- Successfully completed the PR2 Performance Verification Test of API 6A Appendix F and API 17D Section 307.
- The stem seal is a Peek thrust seal and an HNBR O-ring secondary seal.
- The spindle design is anti-blowout.
- One quarter turn operation provides simple position indication.
- Unique sprung non-elastometric Peek seats provide low pressure sealing and protects the valves cavity from debris.
- If stop pin shears due to overtorque, the valve internals will not be damaged and the valve can still be opened and closed.
- Uninterrupted flow passage through valve.
- Standard certification for pressure retaining and parts are to API 6A PSL 3 and BS EN 10204 3.1 (3.2 option available).

Technical Specifications

- Bore sizes, 0.55" [14mm], (0.787" [20mm] available at reduced pressure)
- Pressure rating, 10,000psi [690 bar]
- Hyperbarically tested to water a depth of 10,000ft [3050m]
- Performance tested to PR2 for Temperature Classifications U (0°F/-18°C to +250°F/121°C)
- Available in API Material Classes FF and HH to NACE MR-01-75 latest revision



Operator

- Nominal Operating Torque 20lbf-ft [27N-m], 90 degrees
- Torque to Damage 170lbf-ft [230N-m]
- Lever option for divers
- Stem adapters to suit ROV teebar or paddle handles

Image shown is a standard Single Isolate ½" bore Floating Ball valve with welded process connections. Due to the many options and configurations available with this product please contact Oliver Valvetek Sales for a bespoke solution.

Rev 1.2

Oliver Valvetek Ltd, Parkgate Industrial Estate, Knutsford, Cheshire, WA16 8DX. United Kingdom.

T: +44 1565 632636 E: sales@valves.co.uk. W: www.valves.co.uk